



RESTAURANT & REAL ESTATE FOR SALE

105 E. Lafayette Avenue, Abilene, Kansas



SALE PRICE: \$1,200,000 | 11,932 SF BUILDING

DEMOGRAPHICS

	1 mile	3 miles	5 miles
Estimated Population	1,290	7,050	8,018
Avg. Household Income	\$85,089	\$85,300	\$86,534

- Strategically positioned along the I-70 corridor
- Highway visibility
- Strong existing customer base
- Full industrial catering kitchen
- Munson Angus Farms vendor opportunity
- Business and real estate for sale



CLICK HERE TO VIEW MORE
LISTING INFORMATION

For More Information Contact:

CAMREN SINCLAIR | 816.412.7352 | csinclair@blockandco.com

GREG ROBERTS | 816.412.7384 | groberts@blockandco.com

Exclusive Agents

PHOTOS



NEARBY BUSINESSES



cypress bridge candle co



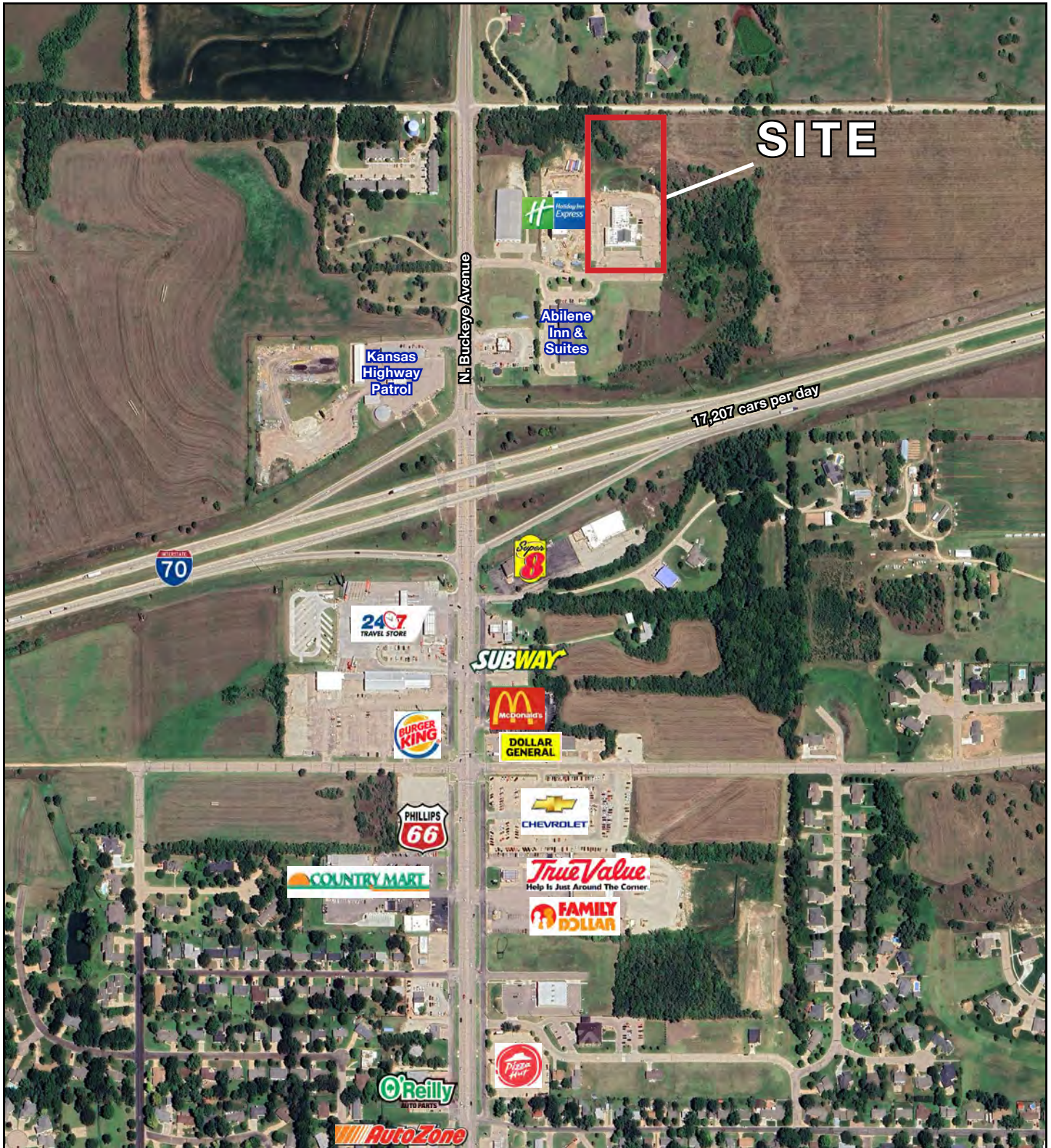
Pizza



RESTAURANT & REAL ESTATE FOR SALE

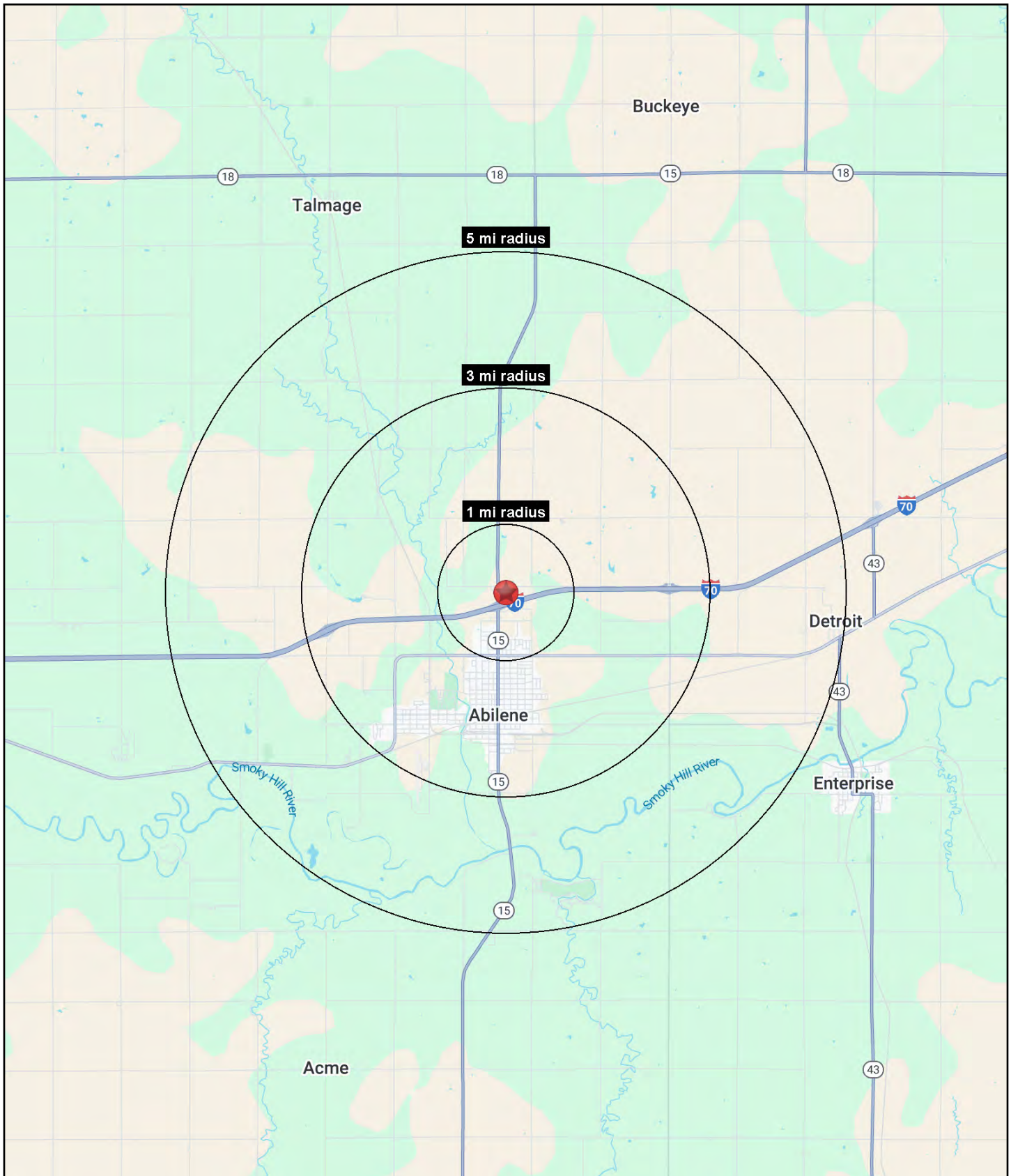
105 E. Lafayette Avenue, Abilene, Kansas

AERIAL



RESTAURANT & REAL ESTATE FOR SALE

105 E. Lafayette Avenue, Abilene, Kansas





RESTAURANT & REAL ESTATE FOR SALE

105 E. Lafayette Avenue, Abilene, Kansas

105 E. Lafayette Avenue Abilene, KS 67410	1 mi radius	3 mi radius	5 mi radius
Population			
2025 Estimated Population	1,290	7,050	8,018
2030 Projected Population	1,319	7,425	8,441
2020 Census Population	1,259	7,312	8,219
2010 Census Population	1,330	7,718	8,660
Projected Annual Growth 2025 to 2030	0.4%	1.1%	1.1%
Historical Annual Growth 2010 to 2025	-0.2%	-0.6%	-0.5%
2025 Median Age	42.7	40.0	40.2
Households			
2025 Estimated Households	540	3,021	3,421
2030 Projected Households	549	3,133	3,549
2020 Census Households	564	3,120	3,481
2010 Census Households	582	3,221	3,592
Projected Annual Growth 2025 to 2030	0.3%	0.7%	0.7%
Historical Annual Growth 2010 to 2025	-0.5%	-0.4%	-0.3%
Race and Ethnicity			
2025 Estimated White	92.4%	91.2%	91.4%
2025 Estimated Black or African American	1.1%	1.8%	1.6%
2025 Estimated Asian or Pacific Islander	0.8%	0.6%	0.6%
2025 Estimated American Indian or Native Alaskan	0.2%	0.3%	0.3%
2025 Estimated Other Races	5.6%	6.1%	6.0%
2025 Estimated Hispanic	6.0%	7.0%	6.8%
Income			
2025 Estimated Average Household Income	\$85,089	\$85,300	\$86,534
2025 Estimated Median Household Income	\$73,141	\$62,500	\$64,515
2025 Estimated Per Capita Income	\$35,632	\$36,757	\$37,118
Education (Age 25+)			
2025 Estimated Elementary (Grade Level 0 to 8)	1.7%	2.5%	2.4%
2025 Estimated Some High School (Grade Level 9 to 11)	3.1%	6.1%	6.2%
2025 Estimated High School Graduate	31.4%	31.4%	31.3%
2025 Estimated Some College	22.6%	25.7%	25.5%
2025 Estimated Associates Degree Only	15.0%	10.8%	10.9%
2025 Estimated Bachelors Degree Only	22.8%	17.3%	17.0%
2025 Estimated Graduate Degree	3.4%	6.3%	6.6%
Business			
2025 Estimated Total Businesses	69	353	365
2025 Estimated Total Employees	790	3,201	3,273
2025 Estimated Employee Population per Business	11.5	9.1	9.0
2025 Estimated Residential Population per Business	18.8	20.0	22.0

©2025, Sites USA, Chandler, Arizona, 480-491-1112 Demographic Source: Applied Geographic Solutions 5/2025, TIGER Geography - RS1